

## CONTACT US

FIND US HERE



### Registered Office

BLK General Trading LLC,  
Al Tawhidi Building, Office M06,  
Mankhool Area, PO Box:45414,  
Bur Dubai, UAE.

☎ +971 4 224 2313 – 10 Lines

☎ +971 55 9140 616

☎ +971 55 9140 332

✉ [bdm@blkgt.com](mailto:bdm@blkgt.com)

🌐 [www.blkgt.com](http://www.blkgt.com)

### Engineering Facility

No. 8/45A, Madurai Road, Gangaikondan,  
Near SIPCOT Industrial Area,  
Next to ABCOY Garden,  
Tirunelveli District,  
Tamil Nadu – 627 352, INDIA.

☎ +91 98430 55064

✉ [anbarasu@blkgt.com](mailto:anbarasu@blkgt.com)

### Administrative Office

#745/1, Gnanagiri Road,  
Sivakasi, Virudhunagar District,  
Tamil Nadu– 626 189, INDIA.

☎ +91 4562 226384 – 89 (6Lines)

☎ +91 99940 55064

✉ [marketing@blkgt.com](mailto:marketing@blkgt.com)

[www.blkgt.com](http://www.blkgt.com)



## BLK General Trading LLC

- ❖ SUPPLIES
- ❖ LOGISTICS
- ❖ CONSTRUCTION
- ❖ SERVICES



[www.blkgt.com](http://www.blkgt.com)

## ABOUT US

### WHO WE ARE

“BLK General Trading LLC” is a leading Engineering & Logistics Company specialized in manufacturing Temporary Structures & Pre-Engineered buildings and supplying Turnkey solutions meeting all the clients' requirements.



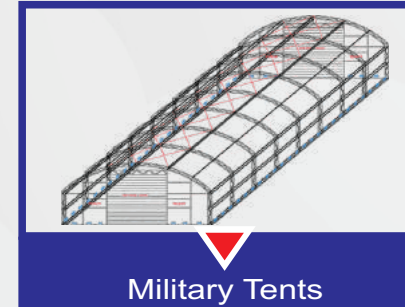
From a modest start of design and manufacture of Temporary Structure, we derive our corporate identity and had developed our expertise over the years to be recognized as a pioneer in the concept of engineered way of Modular buildings and Pre-Engineered Buildings in Gulf countries.

We have designed, fabricated, supplied and installed a number of projects with Turnkey solutions starting with Afghanistan and have extended over other Middle East Regions.

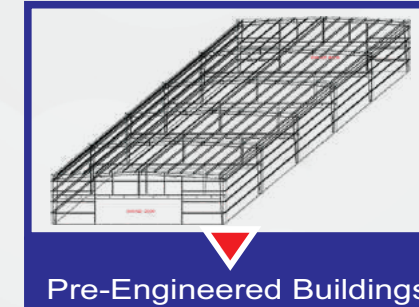
We have well equipped engineering facility having well trained and dedicated engineers to assist our clients. It is located in Tirunelveli, Tamil Nadu, India which is very close to Tuticorin Seaport and Airport for convenient shipping.

## MANUFACTURE & SUPPLY

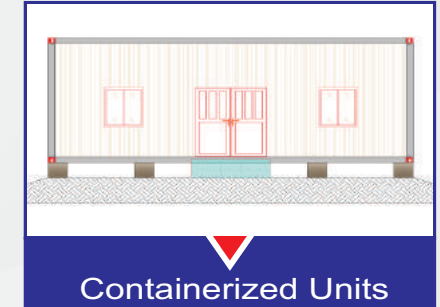
### KNOW ABOUT OUR PRODUCTS



Military Tents



Pre-Engineered Buildings



Containerized Units

We provide supplies, logistics, installation and other services for a variety of products covering structural, architectural, HVAC (Heating, Ventilation & Air-conditioning), plumbing, Interior & Exterior Electrical solutions, communication and fire protection systems.

Our design of Temporary structures, Modular buildings and Pre-engineered buildings are customizable to accommodate any requirement of the end-user. We offer our products with doors, windows, dry wall partitions (Fire proof & water proof), false ceiling, MDF board and Marine Plywood with Galvanized metal frames support. We can also offer landscaping materials, internal A to Z furnishing items like decorative lights, switches & sockets, office furniture, reading room & living room furniture, kitchen cabinets, home theatre facility, bathroom sanitary-ware and more.



# MILITARY TENTS

KNOW ABOUT OUR PRODUCTS

04



Accommodation Tent (5x18m)



Office Tent (5x8m)



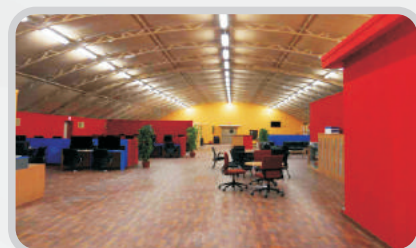
Accommodation Tent Interior View



Office Tent Interior View



Tent (17x45m) Interior View



Tent (17x45m) Exterior View



Shelter Tent

[www.blkgt.com](http://www.blkgt.com)

# MILITARY TENTS

KNOW ABOUT OUR PRODUCTS

05

Military Tents are designed with PVC (Polyvinyl Chloride) coated woven polyester fabric (weatherproof covers) and Mild Steel Tubes (structure frames). Our Insulated tents are an innovative invention of modern growing technology which is highly appreciated by our valuable customers. It reduces up to 45% of the Air-conditioning requirements than an ordinary single covered (non-insulated) structure which results to more energy savings.

- Fire retardant
- 100% Waterproof
- Easy installation
- Easy to clean and dry Fungus
- & Mildew Resistant
- Snow load 20lbs/sq.ft (97.5 kg / m<sup>2</sup>)
- Withstand Wind load 75mph (120kph)
- Withstand Gusty Wind up to 100mph (160kph)
- Especially designed for harsh desert climate
- Easy Disassembly, Relocation & Re-Assembly.

Our tents can be produced of any required size up to 34 meters wide as a clear span design (no internal pole support). We can manufacture tents of varying sizes. Typical fabricated tents are as follows;

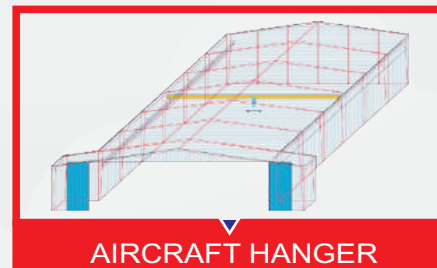
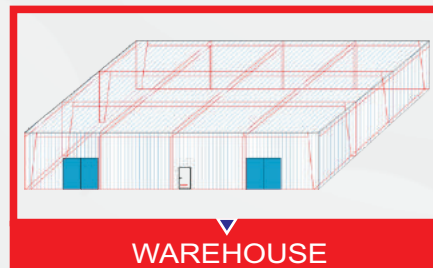
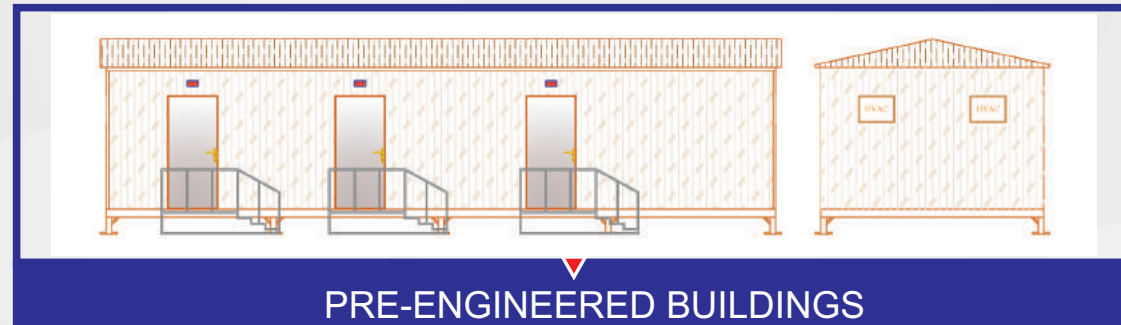
- Shelter Tents: 3x5x3.5m & 5x10x4.5m
- Small Size Tents: 6x10x3.5m & 6x13.5x3.5m
- Medium Size Tents: 9x12x4.2m, 9x30x4.2m & 15x20x5.5m
- Large Size Tents: 17x45x5.5m & 17x45x6.4m
- LAMS: 23x60x9.0m & 20x60x11.0m (Larger Area Maintenance Tent)

Used for,

- Offices
- Accommodation
- Housing Units
- Workshops
- Storage
- Gymnasiums
- Sports Facilities
- Heli Hangar
- Conference Centers
- Dining Facilities
- Vehicle Maintenance Shelter
- Processing Centers

[www.blkgt.com](http://www.blkgt.com)

## PRE-ENGINEERED BUILDINGS



## PRE-ENGINEERED BUILDINGS

All Structures, Claddings and fabrications are designed in accordance with MBMA, AISC-AISI, AWS standards and specifications. All primary and secondary structural members are well grinded and painted with rust inhibitive primers. All Interior partition supports are Pre-Galvanized.

The structures are designed to withstand a minimum wind speed of 110KMPH and can be customized to withstand up to 230KMPH with 3 second gust wind. The primary structures are hot rolled, cold formed or built-up sections of same thickness like I-beams and HSS (Hollow Structural Sections) or varying thickness like tapered beams and assembled at site using nuts and bolts. The secondary frames like girts, rafters and struts are cold formed and screwed to the primary structures at site. The primary structures are braced with cable(X) bracing normally and with portal bracing on bays and sections where unobstructed access is required. Standard Flat or corrugated metal sheets are screwed to the secondary structures for applications where environmental conditioning is not applicable like sunshades and warehouses. Flat or corrugated Sandwich Panels with polyurethane, polyisocyanurate, glasswool or rockwool insulation are screwed to the secondary frames for applications where protection from external thermal influences and air conditioning are applicable like office, dormitories and such. The internal and external color of the metal sheets or sandwich panels can be selected on available standard RAL colors. Eave gutters and downspouts will be provided as a standard for buildings with pitched roof. The building can be fire-proofed, fire-rated and specially coated as required.

We cover a wide range of Pre-Engineered buildings that can be designed for temporary structures in all type of applications such as,

- Factory Buildings
- Warehouses
- Vehicle Shelters
- Canopies
- Sunshades
- Mezzanine Floor
- Community Hall
- Larger Area Maintenance Shelters
- Heli hanger

## CONTAINERIZED UNITS



### LIVING FLAT PACK CONTAINERIZED UNITS



## CONTAINERIZED UNITS

### KNOW ABOUT OUR PRODUCTS

#### Benefits

- Can built as two-storey
- Quick and easy
- Dimensionally exact
- Thermally efficient
- Environment friendly
- Strong & durable
- Portable style, easy to transport and store
- Available with numerous options such as inner partitions, kitchens and showers
- Finished units can be changed by adding or deducting more units
- Easily handled and requires regular lifting equipment and ordinary tools for assembly

The containerized units are demountable flat pack containers and composed of pre-painted sheet steel frame work. Polyurethane foam insulated sandwich panels are used for walls and roofs of the built-up assemblies. The wall panels are designed interchangeable to accommodate the doors and windows in any perimeter position.

Demountable flat pack units are designed for stacking in disassembled and assembled forms. Disassembled containers allow for lower transportation cost. Minimal lifting equipments are required for assembly, can be erected with minimal foundation like level blocks, level compacted soil etc. and can provide resistance to impacts of earth quake and high speed wind.

These can be supplied as complete turnkey projects. Units can be joined together relatively easy to form buildings of different sizes that are customizable with partitions, windows, doors, stairs, canopies and flat or sloped roofs.

- Accommodation Units
- Ablution Units (Toilet & Shower)
- Mobile Camps
- Offices
- Dining Units
- Processing Trailers

# SUPPLIES & LOGISTICS

10



# SUPPLIES & LOGISTICS:

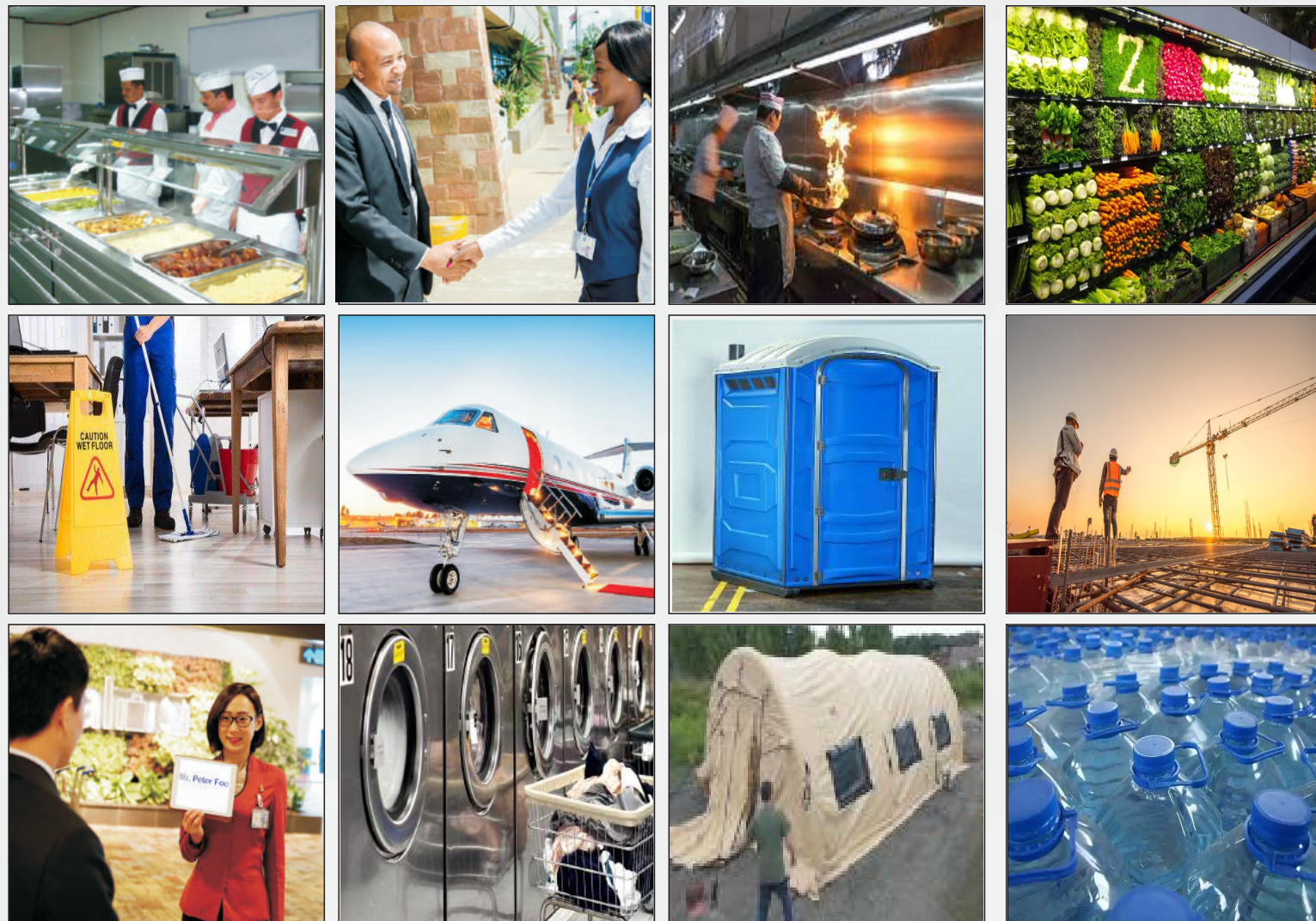
11

We offer supplies and logistics services for a consumable and non-consumable items inclusive of but not limited to the following;

<p><b>Civil &amp; Structural</b></p> <ul style="list-style-type: none"> <li>• Fencing</li> <li>• Getch and Gravel</li> <li>• Concrete dry mix</li> <li>• Concrete Barriers &amp; Bollards</li> <li>• PEBs, RLBs, LAMS, Sunshades, Tents, CHUs, and Heli-Hangers, Portable Ablution units and porta potties</li> <li>• Dies and frames</li> <li>• Carpentry tools</li> <li>• Rust inhibitive paints &amp; weatherproof coatings</li> </ul>	<p><b>Architectural</b></p> <ul style="list-style-type: none"> <li>• Doors</li> <li>• Windows and blinds</li> <li>• Flooring boards and tiles</li> <li>• Ceiling boards and tiles</li> <li>• Partitions</li> <li>• Carpentry and painting</li> <li>• Lumber &amp; Plywood</li> <li>• Furniture, fixtures and equipment (FF&amp;E)</li> <li>• Accessories for the all interior accessories</li> </ul>
<p><b>Mechanical</b></p> <ul style="list-style-type: none"> <li>• Air and Water cooled Chillers</li> <li>• Package units</li> <li>• DX Split Systems</li> <li>• VRF Systems</li> <li>• Exhaust Fans</li> <li>• DOAS Units</li> <li>• Air Movement Products</li> <li>• HVAC equipment and spare parts</li> <li>• Fabric, flexible and rigid ducts.</li> <li>• GENSET Spare Parts</li> </ul>	<p><b>Electrical</b></p> <ul style="list-style-type: none"> <li>• Transformers</li> <li>• Substation-UDS</li> <li>• HV, MV &amp; LV systems</li> <li>• Switch Gears/Distribution boards Control panels</li> <li>• Armored &amp; Unarmored cabling</li> <li>• Flame-proof (MICC) Cables</li> <li>• Lightning Protection Systems</li> <li>• Grounding &amp; Earthing</li> <li>• Solar Lights and Poles System</li> </ul>
<p><b>Communication</b></p> <ul style="list-style-type: none"> <li>• SIPR/NIPR outlets</li> <li>• ELV Systems (CCTV/ Communication/ Access/ Control Faceplate and Pull Boxes)</li> <li>• Protective DS &amp; Junction Boxes</li> <li>• Co-axial cable and jack</li> <li>• Wall mount Communication Cabinet</li> <li>• Shielded patch panel</li> <li>• Loaded unshielded patch panel</li> <li>• RJ45 jacks</li> <li>• Cat6 shield/ unshielded cables</li> </ul>	<p><b>ONG &amp; Plumbing</b></p> <ul style="list-style-type: none"> <li>• FRP/ GRP/ Bolted Steel Tank</li> <li>• ONG Piping</li> <li>• Fresh Water Piping</li> <li>• Sewage Drainage Piping</li> <li>• Storm Drainage Piping</li> <li>• Water Heaters &amp; Boilers</li> <li>• Pump Systems</li> <li>• Pipe Insulation</li> <li>• Plumbing fixtures, fitting &amp; accessories</li> <li>• Toilet fixtures, fitting &amp; accessories</li> </ul>
<p><b>Supply Chain</b></p> <ul style="list-style-type: none"> <li>• Office Equipment &amp; stationery</li> <li>• Catering, Cooking &amp; Food Supplies</li> <li>• Janitorial &amp; custodial Services</li> <li>• Humvee Spare Parts</li> <li>• Water supply</li> </ul>	<p><b>Equipment &amp; Machineries - Lease &amp; Maintenance</b></p> <ul style="list-style-type: none"> <li>• Power Generators</li> <li>• Earth-moving/ Construction</li> <li>• Material Handling Equipment</li> <li>• Heavy Lifting Equipment</li> </ul>
<p><b>Fire Protection</b></p> <ul style="list-style-type: none"> <li>• Wet &amp; Dry Fire Suppression System</li> <li>• Fire Detection &amp; Alarm System</li> </ul>	<p><b>Safety</b></p> <ul style="list-style-type: none"> <li>• PPE supplies</li> <li>• Soft/ hard Barricades, Safety cones, Warning tape, Hazard lights</li> </ul>

## LIFE SUPPORT MAINTENANCE & CONSTRUCTION SERVICES ON CAMPS

Catering, Laundry, Air Charter, Meet and Greet Assist.



## LIFE SUPPORT MAINTENANCE & CONSTRUCTION SERVICES ON CAMPS

### Man Power

We cater highly qualified personnel to all fields of expertise to support with the Projects requirement. Our Manpower services ranges from professional services to turn-key project construction and supervision for short or long terms. We ensure that our candidates meet the highest standards and are certified professional. Trade certificates and work insurance are available upon Request.



## INFRASTRUCTURE

KNOW ABOUT OUR FACILITIES

### CORPORATE HEAD OFFICE

Our Corporate Head office is located in Dubai, UAE. It is well infrastructured with highly capable technical executives, good communication facilities and Management Information System (MIS) to provide the best customer oriented services for meeting their requirement.

### REGIONAL ADMINISTRATIVE OFFICE

Our Regional administrative office is well furnished with highly experienced resources in the field of supplies and logistics. It is located in Sivakasi, India and primarily serves as the domestic procurement and supports the requirements of the Corporate office and the Manufacturing facility.

### MANUFACTURING FACILITY

Our Manufacturing facility is located in Tirunelveli, India and is very close to SIPCOT Industrial Area and ELCOT IT Park. It is well equipped with imported Steel Structure fabricating machinery like Tube Rolling, Bending, Cutting, Drilling, MIG Welding, Press Brake, Shearing and Punching machines with well trained and dedicated Staffs.



## OUR POLICY

KNOW OUR QUALITY POLICY

► “Dedication to superior customer services through progressive management”

It is the company's policy to provide quality services in support of its mission and to be responsive to the individual and collective needs of our clients.

Our goal is to ensure that we fulfill the needs and meet the expectations of our clients, suppliers, employees and the public interests at all times.

Our quality policy is to satisfy all our clients in meeting their requirements with better quality and in a timely manner. In recognition for our services, we strive for continuous improvement on our work performances by;

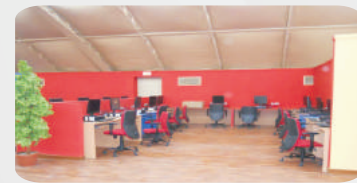
- Ensuring all our employees are trained to possess sound skills in their areas of responsibility for performing their duties as a reflection of our company's commitment to high quality services
- Ensuring all activities are inspected for compliance to the necessary requirements, and any deficiency identified are remedied only with authorized corrective action.
- Ensuring all services, external or internal are documented and recorded in an efficient system.
- Ensuring compliance to our quality policy at all times and at all levels.



**“LET'S COME TOGETHER, SHARE TOGETHER,  
WORK TOGETHER  
&  
SUCCEED TOGETHER”**



# PHOTO GALLERY



Computer Station



Director Room



Coffee Shop



Play Station

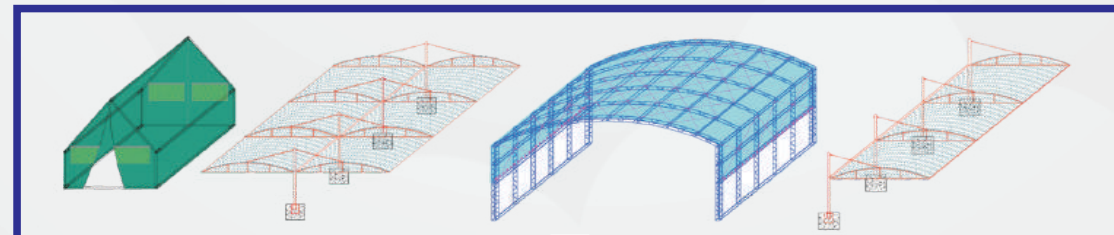


TV Room



Theatre

## USO TENT PHOTOS



SLEEPING TENT, SUNSHADES, CANOPIES & VEHICLE SHELTER



TENT FABRICATION & ERECTION

# PHOTO GALLERY

